



International Police Association (IPA)
Hong Kong Friendship Week 2017
5- 12 November 2017

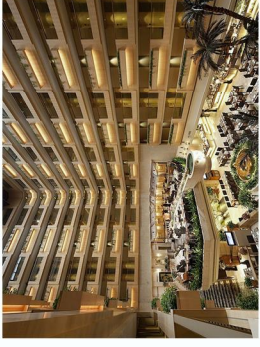


PC TOURS & TRAVEL

Your Accommodation

Option 1. Royal Garden Hotel

Mody Road, Tsim Sha Tsui East, Kowloon, Hong Kong



Single Room for one person

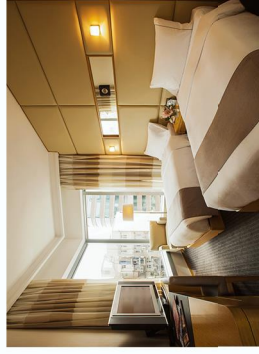
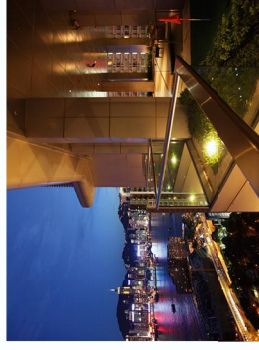
: at HK\$21,850.-

Twin/Double Sharing per person

: at HK\$16,050.-

Option 2. Hotel Panorama by Rhombus

8A Hart Avenue, Tsimshatsui, Kowloon, Hong Kong



Single Room for one person

: at HK\$18,200.-

Twin/Double Sharing per person

: at HK\$14,350.-

Itinerary

Day 1 5 November 2017 (Sunday)

Whole Day Arrival

Evening

Welcome Dinner

Day 2 6 November 2017 (Monday)

Morning

Visit to Hong Kong Police Headquarter

Visit to Central Government Office (CGO)

Lunch: Dim Sum lunch

Afternoon

Visit PMQ is a site with several layers of historical significance.

It has been revitalised as a hub for creative and design industries.

The best way to discover the stunning daytime view of the spectacular Hong Kong Victoria Harbour from the Hong Kong Observation Wheel!

Evening

Harbour Cruise of Aqua Luna

Dinner

Day 3 7 November 2017 (Tuesday)

Morning

Peak tram to the Peak and visit Police Museum
(27 Coombe Road, The Peak)
Visit to Stanley Market
Lunch

Afternoon

Visit Museum of Coastal Defence and followed by Tram Party

Evening

Visit sky 100
Dinner

Day 4 8 November 2017 (Wednesday)

Morning

Visit Lok Ma Chau Police Station
Visit Lam Tsuen Wishing Tree and Tai Po Market
Lunch

Afternoon

Visit to Hong Kong Heritage Museum,
and one of the highlights is Bruce Lee Kung Fu Art Life

Evening

Night Race at Hong Kong Jockey Club

Day 5 9 November 2017 (Thursday)

Whole day free at leisure or joining optional tour
Optional tours are subject to final confirmation, minimum operation of tour

- Option 1 Lantau Island Monastery Tour with vegetarian lunch
- Option 2 Walking Tour at Cheung Chau Island with lunch
- Option 3 Visit Hong Kong Wetland Park
- Option 4 Sai Kung Volcanic Rock Region Sea Tour
- Option 5 Day Excursion to Macau with lunch

Day 6 10 November 2017 (Friday)

Morning

Visit Hong Kong Police College / Police Tactical Unit
Lunch

Afternoon

Visit to Kowloon area (Mongkok),
or Tung Chung Outlet

Evening at leisure

Day 7 11 November 2017 (Saturday)

Day free at leisure of joining optional tours

Evening

Farewell Dinner

Day 8 12 November 2017 (Sunday)

Conclusion of event and depart Hong Kong

****REMARKS:**

Itinerary as described is subject to change according to the traffic
and weather condition.

Optional Tours

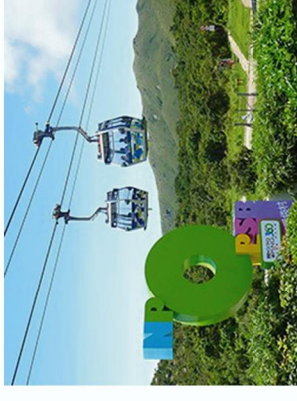
Option 1. Lantau Island Monastery Tour

Duration: 8:30am to 4:00pm (with vegetarian lunch)

Cost: HK\$880 per person

A delightful experience and the best way to explore Lantau. Take the ferry for a spectacular ride through the busy harbour past ocean-going ships to Silvermine Bay, Lantau Island where you'll board a private coach to the beautiful Cheung Sha Beach. After the visit, it's on to Tai O, a unique fishing village where many of the homes are built on stilts. Then your coach will follow a winding road up the mountain to Ngong Ping plateau where you'll visit the majestic **Giant Buddha Statue** and the nearby **Po Lin Monastery**. A Chinese vegetarian lunch will be served in the monastery, followed by a visit to the culturally themed Ngong Ping Village of Ngong Ping 360. The tour ends with a spectacular ride aboard the Skyrail cable car (**Ngong Ping 360**) offering stunning views going down to Tung Chung.

(Should the Skyrail be cancelled due to inclement weather or other safety reasons, alternative transportation will be arranged.)



Option 2. Walking Tour at Cheung Chau Island with lunch

Duration: 8:30am to 6:00pm // Minimum operation: 10 persons

Cost: HK\$700 per person

A walk to Cheung Chau Island (the name means 'Long Island' in Cantonese) is usually a surprise for the first-time visitor. Less than an hour by ferry from the hectic downtown and the pace of life has suddenly slowed to a crawl.

Cheung Chau has no cars, so leisurely exploring it's many narrow back lanes and meeting the local islanders is a rare joy. You'll stop at the century-old Pak Tai Temple. And to get a closer look at the island's working fishing fleet, a traditional sampan can be hired to zip in and around the many morrowed boats. The day's adventure ends with a deliciously fresh local lunch.



Option 3. Visit Hong Kong Wetland Park

Duration: 9:30am to 2:30pm // Minimum operation: 10 persons

at HK\$380 per person

Located at the northern part of Tin Shui Wai, New Territories, Hong Kong, the site of Hong Kong Wetland Park was originally intended to be an ecological mitigation area (EMA) to compensate for the wetlands lost due to Tin Shui Wai New Town development. The 61-hectare Hong Kong Wetland Park demonstrates the diversity of the Hong Kong's wetland ecosystem and highlights the need to conserve them. It presents an opportunity to provide an education and recreation venue with a theme on the functions and values of wetlands for use by local residents and overseas visitors.

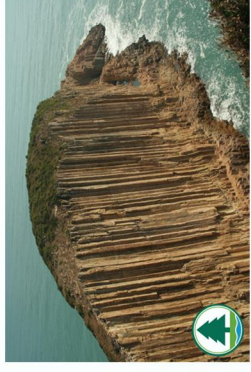
Option 4. Sai Kung Volcanic Rock Region Sea Tour

Afternoon tour // Duration: 2:00pm to 4:30pm

Cost: HK\$600 per person

(subject to schedule available at that time)

- Know more about Sai Kung ancient caldera and formation of hexagonal rock columns and their specialities
- Understand the marine erosion processes
- Story of Tin Hau
- Geoconservation



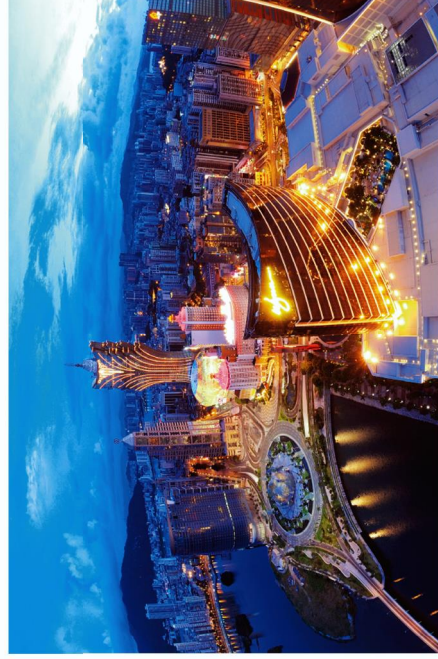
Option 5. Day Excursion to Macau with lunch

Duration: 8:30am to 6:00pm

Cost: HK\$1,400 per person

A 75-minute Turbocat ride brings you to the port of Macau. For centuries a Portuguese enclave, Macau was reverted back to Chinese sovereignty in 1999. Explore the historic center of Macau, listed as UNESCO's World Heritage Site, it combines the cultural and architectural influence of both east and west.

Visit to statue of Kum Yam, a stop at exterior of Macau Tower, A-Ma Temple. See the ruins of St. Paul's Cathedral, Macau's most famous landmark. Stroll through Senado Square, paved by the Portuguese in a unique Mosaic pattern of colored-stones, and along Avenida da Praia Residence. Enjoy lunch at local Portuguese restaurant, followed by time to explore the famous Casino development.



**TERMS & CONDITIONS

- Itinerary as described is subject to change according to the traffic and weather condition.
- Please reconfirm the tour pick up point and time when making your tour reservation.
- The specified pick up time might vary for 10-15 minutes due to heavy traffic condition.
- Please allow 24 hours for visa processing.
- Macau visa fee (whenever applicable) is not included.
- Please bring along your passport on Mainland China & Macau Tour.
- For guest holding Diplomatic, Military or Official Passport, China Visa application is subject to approval by China Visa Office. Please confirm at time of reservation.

Contact

302 Tower A, New Mandarin Plaza
14 Science Museum Road,
Tsim Sha Tsui East, Kowloon,
HONG KONG



(852) 2734 3312



(852) 2367 3375



secretary@ipa-hksar.com



www.pctourshk.com

